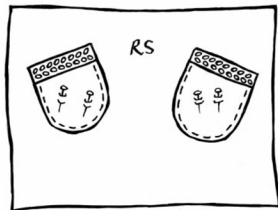


# How to... TIE YOUR OWN APRON STRINGS



01

## supplies and notes\*

- 1m plain cotton and 50cm patterned cloth
- Fabric-marking pencil
- Cotton sewing thread to match
- 4 x 15mm linen buttons
- hand sewing needle
- Sewing machine
- Scissors

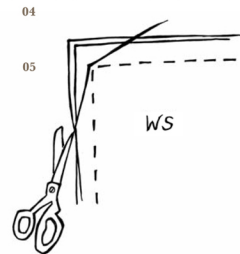
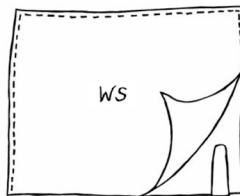
\*\*\* Free downloadable pattern \*\*\*  
visit [www.selvedge.org](http://www.selvedge.org)

### Preparing the pockets and tabs

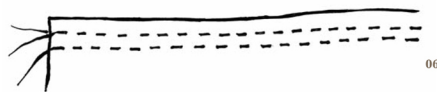
1. First prepare two patch pockets to sew onto your apron\*. You will need two pieces of fabric, one plain and a longer patterned lining, for each pocket. The lining will make a contrasting edge at the top of the pocket. Cut two pieces of plain fabric, 18 x 19cm, and two pieces of patterned fabric, 22 x 19cm. You will also need to cut out and prepare three tabs, 2 x 6cm, each with a buttonhole or button loop\*.

### Making the main part of the apron

2. Cut out on the straight grain a piece of both plain and patterned fabric, 64 x 66cm.
3. On the right side of the plain fabric, place the two prepared patch pockets where required and pin and top stitch\*.
4. Place the two apron sections right side together and pin. Now position the tabs, raw edge to raw edge, one at the centre and the remaining two



7. Set your sewing machine to a long straight stitch and sew two parallel lines of stitching across the top of the apron. Carefully gather up your stitching, just enough to give the apron a gentle shape. When you are satisfied with the amount of gathering, set your sewing machine



to a standard stitch length of 2.5 and straight stitch across the top of the apron, securing the gathering.

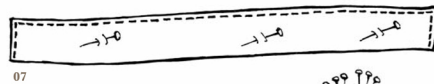
### Making the waistband

8. Cut two pieces of both fabrics measuring 88 x 6cm. Place right sides together and pin. Sew the two sides and the top. Press open the seams and cut the corners back. Turn right side out and press.
9. With the plain side facing you, carefully press under the raw edges. Take the plain edge under a little more to reveal a small narrow strip of

at least 3cm from the outside edges. Make sure that they are facing inwards and upwards, towards the main body of the apron.

5. Using a 1cm seam allowance, straight stitch around the rectangle at the two sides and the bottom. Sew along the top but leave an opening of at least 10cm so that you can turn the apron right sides out. Press open the seams and trim the corners.

6. Turn the fabric to the right side through the small opening and press again, ensuring that the seam line is at the edge. Fold over the 1cm seams at the opening and press flat.



07



the patterned fabric underneath. This will give you a decorative edge running along the waistband.

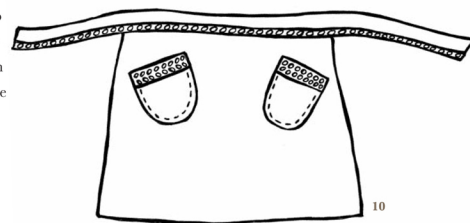
### Finishing the apron

10. Match the centre front point for the waistband and apron, and pin into place. Top stitch the waistband to the apron along the unstitched length of the waistband.

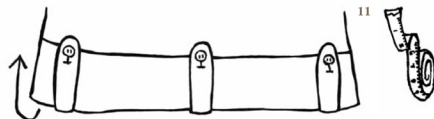
11. Fold up the bottom edge of the apron, by 12cm to reveal the patterned fabric. Line up the buttons with the tabs and stitch in place\*.

Learn to sew, Alison Reid, £5.99

\* full details available to download from [www.selvedge.org/crafts](http://www.selvedge.org/crafts)



10



11